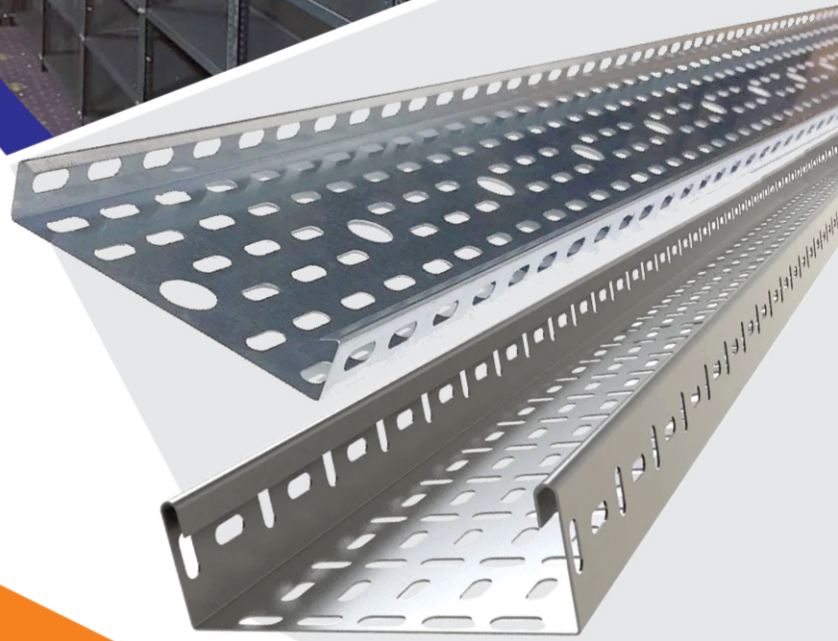




Your Plan, Our Goal



Cable Trays & Total Storage Solution

# Director's Message



**Gaurav Gupta**

Managing Director

## Dear Valued Customers,

At Ralbo Engineering Pvt. Ltd., our customers are at the heart of everything we do. Since our inception, we have been committed to delivering high-quality Cable Trays, Racking Systems, and Storage Solutions that not only meet industry standards but also exceed customer expectations.

At Ralbo, we prioritize customer satisfaction, innovation, and reliability. Our team is dedicated to providing excellent service, ensuring timely deliveries, and offering tailored solutions to enhance your storage capabilities.

Your trust has been our biggest strength, and it inspires us to continuously innovate, adopt modern technology, and provide reliable solutions that contribute to your success. We firmly believe that a strong relationship is built on quality, transparency, and service, and we are proud to uphold these values in every project we undertake.

As we continue to grow, our focus remains on:

- Excellence in quality of our products.
- Timely delivery to meet your business needs.
- Customer satisfaction through dedicated service and support.

On behalf of the entire Ralbo Engineering team, I thank you for your continued trust and partnership. We look forward to serving you with the same passion and commitment in the future.

## Vision

"To be a globally recognized leader in providing innovative, reliable, and sustainable cable management and storage solutions, empowering industries with world-class quality, advanced technology, and customer-centric service."

### Vision highlights >>>

- ❖ **Global ambition** - not just local presence.
- ❖ **Innovation & Reliability** - core strengths in engineering.
- ❖ **Customer focus** - builds trust and loyalty.
- ❖ **Sustainability** - modern expectation from industries.

### Mission >>>

- ❖ To deliver superior-quality products that exceed customer expectations.
- ❖ To adopt cutting-edge technology for continuous improvement and innovation.
- ❖ To build long-term partnerships based on trust, integrity, and excellence.
- ❖ To contribute to industrial growth with sustainable and cost-effective solutions.

### Key Features of Our Products >>>

- ❖ High durability and load-bearing capacity.
- ❖ Corrosion-resistant and long-lasting.
- ❖ Easy installation and maintenance.
- ❖ Flexible designs suitable for various industries.

## Our Strengths >>>

- ❖ Modern manufacturing facility with advanced machinery.
- ❖ Highly skilled and experienced team.
- ❖ Strict quality control and testing process.

## Industries We Serve >>>

- ❖ Manufacturing
- ❖ Construction
- ❖ Healthcare & Pharmaceuticals
- ❖ Fertilizer Industries
- ❖ Cement Plant
- ❖ Auto Industry
- ❖ Oil Industries
- ❖ Warehousing & Logistics
- ❖ IT & Data Centres
- ❖ Retail & Commercial Establishments
- ❖ Coal Mines
- ❖ Chemical Industries
- ❖ Power Plant

## Why Ralbo?

- ❖ **Innovative Solutions:** Ralbo's focus on innovation could make them a go-to for businesses seeking cutting-edge storage and cable management solutions.
- ❖ **Quality Products:** Their emphasis on quality might ensure that their products meet high standards, providing reliability for customers.
- ❖ **Customer-Centric Approach:** Transparent dealings, responsive support, & long-term partnership focus.
- ❖ **Experience and Expertise:** With experience in the industry, Ralbo might have developed a deep understanding of customer needs, allowing them to deliver effective solutions.
- ❖ **Comprehensive Product Range:** Offering a variety of products, such as Cable Trays and Storage solutions, could make Ralbo a one-stop-shop for businesses with diverse needs.
- ❖ **Strong Reputation:** Positive reviews, testimonials, industry recognition could contribute to Ralbo's reputation as a trusted and reliable partner.
- ❖ **Wide Product Range:** From Cable Trays to Heavy-duty Racks, Mezzanine Floors, Lockers, and customized storage solutions.
- ❖ **Customization:** Tailor-made solutions to meet specific client requirements.
- ❖ **On-Time Delivery:** Strong logistics and efficient production capacity to meet deadlines.
- ❖ **Proven Track Record** - Trusted by leading industries across manufacturing, warehousing, IT, construction, and retail.

## Product Range

- ❖ **1. Cable Management Systems**
  - ❖ **Perforation Cable Trays** - Lightweight, ventilated trays for wiring.
  - ❖ **Ladder Type Cable Trays** - Strong design for heavy-duty cable support.
  - ❖ **Raceways with Cover** - Enclosed systems for cable protection.
  - ❖ **Solid Cable Trays** - For sensitive wiring with complete protection.
  - ❖ **Cable Tray Accessories** - Bends, Tees, Reducers, Couplers, Hardware, etc.

## 2. Racking & Storage Solutions

- ❖ **Slotted Angle Racks** - Adjustable & multipurpose storage.
- ❖ **Heavy Duty Racks (Omega Type)** - High load-bearing for warehouses.
- ❖ **Pallet Racks** - For industrial goods & bulk storage.
- ❖ **Cantilever Racks** - Perfect for pipes, rods and long materials.
- ❖ **Pigeon Hole Racks** - Small parts & component storage.
- ❖ **Worker Lockers** - Secure storage for employees.
- ❖ **Mezzanine Floors** - Double storage capacity by utilizing height.
- ❖ **Compactor (Mobile) Racks** - Space-saving storage systems
- ❖ **Office Almirah** - Strong and durable storage cabinet

## Ladder Cable Trays

Ladder Cable Trays are a type of cable management system used to support and route electrical cables, wires, and other communication cables. They consist of two side rails connected by rungs, resembling a ladder.



### Key Features: >>>

- ❖ **Cable Support:** Ladder cable trays provide a sturdy platform for cables, keeping them organized and secure.
- ❖ **Easy Access:** The open design allows for easy installation, maintenance, and modification of cables.
- ❖ **Flexibility:** Ladder cable trays can be customized to fit specific cable routing needs.

### Common Applications: >>>

- ❖ **Industrial Settings:** Manufacturing plants, warehouses, and factories.
- ❖ **Commercial Buildings:** Office buildings, shopping malls, and hospitals.
- ❖ **Data Centers:** Server rooms and data storage facilities.
- ❖ **Power Generation and Distribution:** Power plants, substations, and transmission lines.

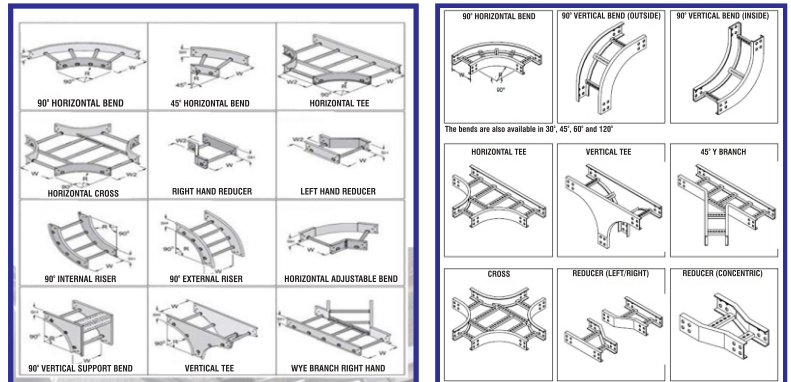
### Benefits: >>>

- ❖ **Improved Cable Management:** Keeps cables organized, reducing clutter and tripping hazards.
- ❖ **Enhanced Safety:** Protects cables from damage and reduces the risk of electrical fires.
- ❖ **Increased Efficiency:** Simplifies cable installation, maintenance, and troubleshooting.
- ❖ Provides strong, rigid support for heavy-duty **power** and **control cables**.
- ❖ **Air Circulation:** The open design allows for natural ventilation, helping to dissipate heat from power cables.
- ❖ **Ease of Installation:** Easy to install and modify - Cables can be easily added or removed.
- ❖ **Durability:** High mechanical strength makes it suitable for harsh environments, including chemical plants and outdoor installations.
- ❖ **Cost-Effective:** Reduces need for conduit or raceway systems, saving on material and labour costs.

**Material:** Usually made from Steel (Pre-galvanized, Ms Powder Coated, Hot dip Galvanized, Stainless Steel & Aluminium).

**Available in:** Different widths, rung spacing (typically 6, 9, or 12 inches), and heights to suit load requirements.

<b>Widths</b>	50 mm to 1200 mm (depending on duty)
<b>Side heights</b>	25 mm to 100 mm
<b>Thickness</b>	1.6 mm to 3.0 mm
<b>Tray Length</b>	2.5 Mtr & 3 Mtr



**Ladder Cable Tray Accessories** →

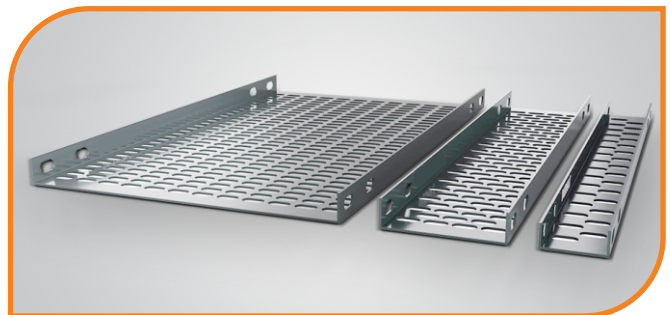
## When to Use Ladder Cable Trays? >>>

- ❖ You need long cable runs
- ❖ **Heavy cables** are involved (like 3-phase power cables)
- ❖ Heat buildup is a concern.
- ❖ Frequent **maintenance or cable replacement** is expected.

## Perforation Cable Trays

Perforated Cable Trays are one of the most commonly used types of cable trays in electrical and industrial installations.

Perforated cable trays are a type of cable management system featuring holes or perforations throughout the tray's surface. These trays support and route electrical cables, wires, and communication cables while allowing for airflow and cable management.



## Key Features: >>>

- ❖ **Cable Support:** Perforated cable trays provide a platform for cables, keeping them organized and secure.
- ❖ **Airflow and Ventilation:** Perforations enable air to circulate around cables, helping to dissipate heat and reduce the risk of overheating.
- ❖ **Cable Management:** Trays can be customized to fit specific cable routing needs.
- ❖ They also allow **dust, heat, and moisture to escape**, preventing damage to cables.
- ❖ The holes make it easier to **tie or clamp cables** in place.
- ❖ **In Indoor Installations:** Best suited for indoor environments like offices, factories, data centres, and malls.

## Common Applications: >>>

- ❖ **Industrial Settings:** Manufacturing plants, factories, and processing facilities.
- ❖ **Commercial Buildings:** Office buildings, shopping malls, and hospitals.
- ❖ **Data Centers:** Server rooms and data storage facilities.
- ❖ **Power Generation and Distribution:** Power plants, substations, and transmission lines.

## Benefits: >>>

- ❖ **Improved Cable Management:** Keeps cables organized, reducing clutter and tripping hazards.
- ❖ **Enhanced Safety:** Protects cables from damage and reduces the risk of electrical fires.
- ❖ **Increased Efficiency:** Simplifies cable installation, maintenance, and troubleshooting.
- ❖ **Better Heat Dissipation:** Perforations help to reduce heat buildup around cables.
- ❖ **Flexibility:** Can be installed in straight runs, bends, T-sections, and vertical drops using accessories.

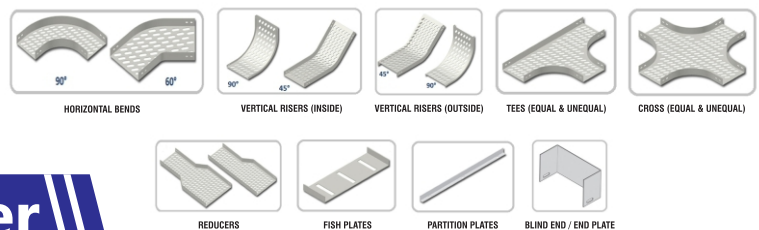
Perforated cable trays are suitable for various environments, providing a reliable and efficient cable management solution.

**Material:** Usually made from Steel (Pre-galvanized, Ms Powder Coated, Hot dip Galvanized, Stainless Steel & Aluminium)

**Available in:** Different widths and heights to suit load requirements

<b>Widths</b>	50 mm to 1000 mm (depending on duty)
<b>Side heights</b>	25 mm to 100 mm
<b>Thickness</b>	1.2 mm to 3.0 mm
<b>Tray Length</b>	2.5 Mtr & 3 Mtr

### Perforation Cable Tray Accessories



## Raceway with Cover or Solid Cable Trays

A raceway with cover is a type of cable management system that provides a protective enclosure for electrical cables, wires, and communication cables. The cover helps to shield the cables from environmental factors and physical damage.



## Key Features: >>>

- ❖ **Cable Protection:** The cover protects cables from dust, debris, and moisture, physical damage, and rodents.
- ❖ **Security:** The enclosure helps to prevent tampering or unauthorized access to cables.
- ❖ **Organization:** Raceways keep cables organized and tidy.
- ❖ Ideal for environments where cables are at risk of exposure.

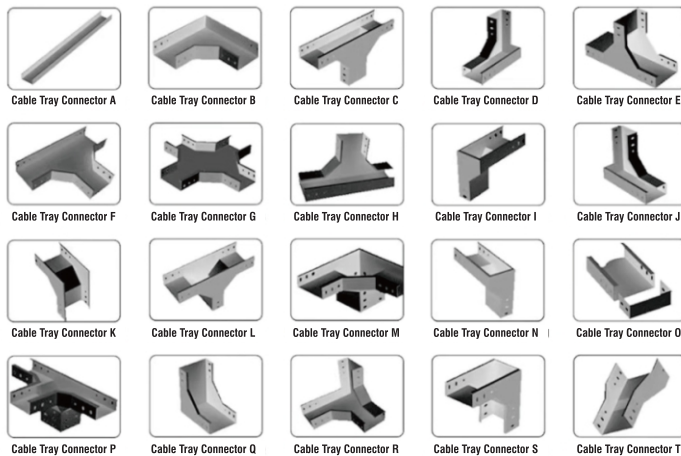
## Common Applications: >>>

- ❖ **Industrial Settings:** Manufacturing plants, factories, and processing facilities.
- ❖ **Commercial Buildings:** Office buildings, shopping malls, and hospitals.
- ❖ **Data Centers:** Server rooms and data storage facilities.
- ❖ **Outdoor Installations:** Areas exposed to weather or environmental stress.

## Benefits: >>>

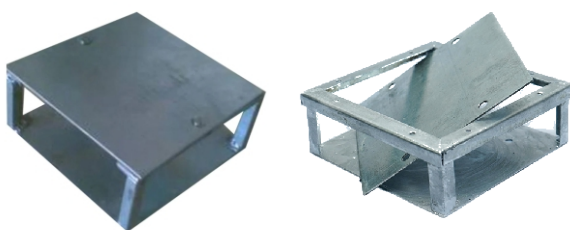
- ❖ **Cable Protection:** Shields cables from damage and degradation.
- ❖ **Safety:** Reduces the risk of electrical fires and shock.
- ❖ **Compliance:** Meets regulatory requirements for cable management.
- ❖ **Ease of Maintenance:** Simplifies cable installation, maintenance, and troubleshooting.
- Raceways are usually made of **GI (Pre-galvanized), Ms Powder Coated, Aluminium & Stainless Steel**

## Raceway (Bottom Cable Trays) Accessories



Item Name	Product Picture	Description
Connector		Used for straight sections and accessories connect.
C-Section Steel Twin Screw Hanger K		Used for ceiling mounting fit for all types of perforated cable tray.
Triangle Strut Bracke		Cross-bar Thickness:2.5m.
Strut Bracke		Support trays on wall fit for with 100-300mm perforated cable tray.
T006 M8*18 Flange Screw		Support trays on wall fit for with 100-450mm perforated cable tray.
T007 M8 Flange Nut		Used for fastening Side Connector.

## GI Junction Box



## Strut Channel



## Slotted C-Channel



## Heavy Duty Racks Omega Type

Heavy Duty **Omega Type Racks** are **industrial storage systems** designed for handling medium to heavy loads. The term Omega Type refers to the **upright (vertical frame) shape**, which is bent or formed in an "**Ω**" (**omega**) **profile**. This omega-shaped profile gives the rack **extra strength, durability, and load-bearing capacity** while using less material compared to plain sections.



### Key Features: >>>

- ❖ **High Load Capacity:** Omega-type racks are engineered to support substantial weights, making them ideal for storing heavy cartons, boxes, and components.
- ❖ **Durable Construction:** Typically made from sturdy materials like steel, these racks are built to withstand rigorous use.
- ❖ **Customizable:** Can be tailored to fit specific storage needs and space constraints.
- ❖ **Strong Omega Uprights** Provide rigidity and prevent bending under heavy weight.
- ❖ **Boltless or Bolted Assembly** - Easy to install, dismantle, and reconfigure.

### Common Applications: >>>

- ❖ **Warehouses:** For storing heavy inventory, machinery, or equipment.
- ❖ **Manufacturing Facilities:** To organize and store raw materials, work-in-progress, or finished goods.
- ❖ **Distribution Centers:** For efficient storage and retrieval of heavy products.
- ❖ **Industrial Settings:** Such as factories, plants, or workshops.
- ❖ **Automobile Sector** - To keep auto components, spare parts, and assemblies.
- ❖ **Retail Distribution Centres** - Organizing bulk goods, cartons, and inventory.
- ❖ **Textile & Garment Units** - For fabric rolls, cartons, or packed goods.
- ❖ **Pharma & FMCG** - Storage of bulk medicines, packaging material, and supplies.
- ❖ **Cold Storage & Logistics** - Omega racks are often used in racking systems for heavy pallets.
- ❖ **E-commerce & Storage Hubs** - Fast access to stored products for order fulfilment.

### Benefits: >>>

- ❖ **Increased Storage Capacity:** Maximizes vertical space and storage efficiency.
- ❖ **Improved Organization:** Helps maintain a tidy and organized workspace.
- ❖ **Enhanced Safety:** Reduces the risk of accidents and damage to goods.
- ❖ **Flexibility:** Can be adapted to various industries and storage requirements.

# Modular Mezzanine Floors

Modular Mezzanine floors are elevated platforms that can be installed within existing buildings to provide additional storage or workspace. They're designed to be flexible, efficient, and cost-effective. It is a **semi-permanent intermediate floor** built inside a building to increase usable space without the need for civil construction.

- ❖ It is **modular**, meaning it is **pre-engineered, demountable, and relocatable**.
- ❖ Built using **steel columns, beams, and decking panels**, it can be installed inside warehouses, factories, showrooms, or offices.
- ❖ It allows **optimal use of vertical height** in buildings where floor-to-ceiling height is high.



## Key Features: >>>

- ❖ **Modular Design:** Easy to install, modify, and expand.
- ❖ **Space Optimization:** Maximizes vertical space, increasing storage or workspace.
- ❖ **Flexibility:** Can be customized to fit specific needs.
- ❖ **Customizable** - Designed as per load capacity, floor height, and layout.
- ❖ **Quick Installation** - No heavy civil work required, just bolted steel structures.
- ❖ **Expandable & Relocatable** - Can be dismantled and reinstalled at another location.

## Common Applications: >>>

- ❖ **Warehouses:** Additional storage for inventory, shelving, or racking.
- ❖ **Manufacturing Facilities:** Extra workspace for production, assembly, or testing.
- ❖ **Distribution Centers:** Increased storage and operational space.
- ❖ **Office Spaces:** Additional workspace, meeting rooms, or storage.

## Benefits: >>>

- ❖ **Increased Storage:** Maximizes vertical space, reducing clutter.
- ❖ **Improved Efficiency:** Enhances workflow, productivity, and accessibility.
- ❖ **Cost-Effective:** Avoids costly building expansions or relocations.
- ❖ **Adaptability:** Easily reconfigured as needs change.

Modular mezzanine floors offer a practical solution for businesses seeking to optimize space utilization.

# Cantilever Racks

Cantilever racks are a type of storage system designed for storing long, heavy, or bulky items such as lumber, pipes, or machinery. They feature horizontal arms that extend from a vertical column, providing unobstructed storage space.



## Key Features: >>>

- ❖ **Unobstructed Storage:** Cantilever arms allow for easy loading and unloading of long items.
- ❖ **Adjustable Arms:** Can be customized to fit various load sizes and shapes.
- ❖ **Heavy-Duty Construction:** Designed to support substantial weights and withstand rigorous use.

## Common Applications: >>>

- ❖ **Lumber Yards:** Storing lumber, timber, and other building materials.
- ❖ **Manufacturing Facilities:** Storing raw materials, work-in-progress, or finished goods.
- ❖ **Construction Sites:** Storing pipes, beams, and other construction materials.
- ❖ **Industrial Settings:** Such as factories, plants, or workshops.

## Benefits: >>>

- ❖ **Efficient Storage:** Maximizes storage space for long or bulky items.
- ❖ **Easy Access:** Allows for easy loading and unloading of items.
- ❖ **Flexibility:** Can be customized to fit specific storage needs.
- ❖ **Durability:** Built to withstand heavy use and support substantial weights.

Cantilever racks are a practical solution for businesses that need to store long or heavy items efficiently.

## Worker Locker

A **worker locker** is a secure storage unit provided to employees in workplaces such as factories, offices, warehouses, hospitals, gyms, and other institutions. It is usually made of **metal (steel)** and comes with a lock and key, padlock, or digital lock system.

## Key Features: >>>

- ❖ **Secure Storage:** Lockers provide a safe and private space for workers to store their belongings.
- ❖ **Durable Construction:** Built to withstand heavy use and harsh environments.
- ❖ **Customizable:** Available in various sizes, configurations, and materials.
- ❖ **Personal Belongings Storage** - Workers can keep their clothes, shoes, bags, wallets, mobile phones, and other personal items safely during working hours
- ❖ **Uniform & Workwear Storage** - Especially in industries, hospitals, and manufacturing plants, workers can store their uniforms, PPE (Personal Protective Equipment), helmets, and safety gear.



## Common Applications: >>>

- ❖ **Industrial Facilities:** Factories, plants, and workshops.
- ❖ **Construction Sites:** Portable lockers for workers on-site.
- ❖ **Manufacturing Plants:** Secure storage for employees' personal items.
- ❖ **Warehouses:** Storage for workers' gear and equipment.

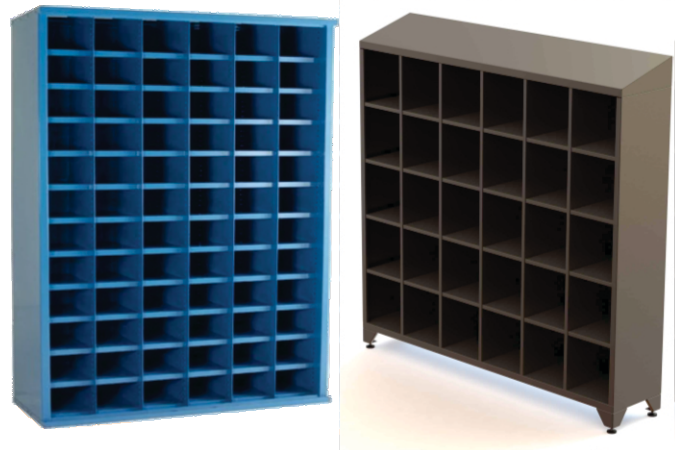
## Benefits: >>>

- ❖ **Security:** Protects workers' personal belongings from theft or loss.
- ❖ **Organization:** Keeps workplaces tidy and organized.
- ❖ **Convenience:** Provides a designated space for workers to store their gear.
- ❖ **Compliance:** Meets regulatory requirements for workplace safety and security.

Worker lockers are an essential component of many workplaces, promoting a safe, organized, and secure environment for employees. Lockers can be **single-door, multi-door, or compartmentalized** depending on the number of employees and space availability.

## Pigeon Hole Racks

A **Pigeon Hole Rack** is a type of storage system designed with multiple small compartments (holes or slots) arranged in a systematic manner, resembling a pigeon's nesting holes. These racks are commonly made of **metal** and are widely used in offices, warehouses, libraries, and workshops.



## Key Features: >>>

- ❖ **Multiple Compartments:** Many small cubbies for storing various items.
- ❖ **Organized Storage:** Ideal for keeping small parts, files, documents, stationery, and tools in a systematic way.
- ❖ **Customizable:** Available in different sizes and configurations.
- ❖ **Easy Identification** - Each compartment can be labelled, making it simple to identify and access items quickly.
- ❖ **Space Utilization** - Maximizes storage capacity in limited spaces by dividing the rack into multiple sections.

## Common Applications: >>>

- ❖ **Offices:** Storing mail, documents, or office supplies.
- ❖ **Mailrooms:** Sorting and storing mail, packages, or messages.
- ❖ **Schools:** Organizing student assignments, papers, or materials.
- ❖ **Industrial Settings:** Storing small parts, tools, or equipment.

## Benefits: >>>

- ❖ **Improved Organization:** Keeps items sorted and easily accessible.
- ❖ **Increased Productivity:** Saves time searching for specific items.
- ❖ **Reduced Clutter:** Keeps workspaces tidy and organized.
- ❖ **Customization:** Can be tailored to fit specific storage needs.

Pigeon hole racks are available in various sizes & designs - from small tabletop models to large industrial racks depending on usage.

# Slotted Angle Racks

A **Slotted Angle Rack** is one of the most versatile and widely used storage systems, made of **mild steel angles with slots** that allow shelves to be adjusted at different heights. These racks are easy to assemble, dismantle, and reconfigure as per storage needs.

## Key Features: >>>

- ❖ **Adjustable Shelves:** Slots allow for easy adjustment of shelf heights. **Industrial & Warehouse Storage**
- ❖ Ideal for storing raw materials, spare parts, tools, cartons, and finished goods.
- ❖ Can hold both light-duty and medium-duty loads.



## Domestic Use >>>

- ❖ Common in homes for storing household items, books, kitchen supplies, and garage tools.
- ❖ **Durable Construction:** Made from sturdy steel for heavy-duty use.
- ❖ **Customizable:** Can be tailored to fit specific storage needs.

## Common Applications: >>>

- ❖ **Warehouses:** Storing inventory, supplies, or equipment.
- ❖ **Industrial Settings:** Factories, plants, or workshops.
- ❖ **Offices:** Storing files, supplies, or office equipment.
- ❖ **Retail:** Displaying merchandise or storing inventory.

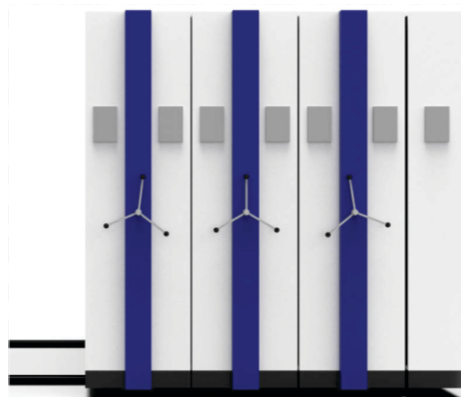
## Benefits: >>>

- ❖ **Flexibility:** Easily adjustable shelves accommodate various item sizes.
- ❖ **Durability:** Withstands heavy loads and harsh environments.
- ❖ **Cost-Effective:** A practical storage solution for various industries.
- ❖ **Easy Installation:** Simple to assemble and install.

Slotted angle racks provide a practical and adaptable storage solution for many businesses and industries.

# Compactor (Mobile) Racks

Compactor (Mobile) Racks are **space-saving storage systems** that work on a movable base. Instead of having fixed racks, the entire system is mounted on rails and can be moved manually or mechanically. This allows multiple racks to fit in a smaller area by eliminating the need for permanent aisles between each rack.



## Key Features: >>>

- ❖ **Mounted on rails:** racks move back and forth smoothly.
- ❖ **Space optimization:** saves up to 60–70% floor space compared to conventional racks.
- ❖ **Locking system:** ensures security and restricted access.
- ❖ **Manual or mechanized movement:** operated by hand wheel, push-pull, or motorized system.
- ❖ **Customizable:** available in different sizes, load capacities, and finishes.

## Domestic Use >>>

- ❖ **Offices:** File and document storage.
- ❖ **Libraries:** Books, journals, and records.
- ❖ **Hospitals:** Medical records, pharmacy items, and supplies.
- ❖ **Warehouses and Industries:** Raw materials, tools, spares, and finished goods.
- ❖ **Banks & Institutions:** Secure storage of files, vouchers, and archives.

## Office Almira

An **Office Almira** is a strong and durable storage cabinet, widely used in offices, institutions, and organizations to store files, documents, stationery, and valuables in an organized and secure way.

## Key Features: >>>

- ❖ Made from **CRCA / MS steel sheets** with powder-coated finish for durability.
- ❖ **2-door or 4-door models** available (swing doors or sliding doors).
- ❖ **Adjustable shelves** to store files, registers, and office materials.
- ❖ **Central locking system** for safety.
- ❖ Rust-resistant and easy to maintain.
- ❖ Available in different **sizes, designs, and colors.**



## Domestic Use >>>

- ❖ **Government Departments:** Record-keeping and file management.
- ❖ **Corporate Offices:** Safe storage of important documents, contracts, and files.
- ❖ **Banks & Financial Institutions:** Storage of vouchers, ledgers, and records.
- ❖ **Educational Institutions:** Keeping books, papers, and registers.
- ❖ **Hospitals & Clinics:** Medical records and administrative files.

# Customers







## Staff Group



(ISO 9001:2008)

### Ralbo Engineering Pvt. Ltd.

A - 2/2 - 25, Site - B, Surajpur Indl. Area, Greater Noida,  
Distt. Gautam Budh Nagar - 201306 (U.P)

+91-9873806842, 0120-4614864

E-mail : sales@ralbo.in, ralbo.engg@gmail.com

www.ralbo.in



LinkedIn



YouTube



Facebook



Instagram



Google Maps